

# SignSol

# OUTDOOR LED LIGHTING



## SIGNSOL LTD.

Address: Unit 5 St Martin's Court,  
Cole Road,  
Bristol  
BS4 3QX

TEL: +44-117-230 2442  
MOB: +44-7508523411  
WEB: [www.signsol.co.uk](http://www.signsol.co.uk)

Powered By SignSol

# SignSol

# LIGHTING

## Highway - Private Roads – Venues

- Tunnels
- Streets
- Stadiums
- Golf Courses
- Cycle Paths

Ultra-bright - Ultra-Low Voltage LED  
50,000 lamp hrs 5 year RTF Warranty

**BS EN 50556**  
**BS EN 12368**



# GT10

30-200 W  
LED STREET LIGHT

# SignSol Outdoor LED



3030 LED Chip (24 in 1 lens)	Power Consumption	30 W	40 W	50 W	60 W	80 W	100 W	120 W	150 W	180 W	200 W
	Luminous Flux	4500 lm	5800 lm	7250 lm	8400 lm	12000 lm	15000 lm	18800 lm	22500 lm	27000 lm	30000 lm
LED Quantity	96 PCS	96 PCS	96 PCS	96 PCS	144 PCS	216 PCS	216 PCS	288 PCS	480 PCS	480 PCS	
Luminous Efficacy	150 lm/ W	150 lm/ W	145 lm/ W	140 lm/ W	150 lm/ W	150 lm/ W	150 lm/ W	150 lm/ W	150 lm/ W	150 lm/ W	
5050 LED Chip (8 in 1 lens)	Power Consumption	30 W	40 W	50 W	60 W	80 W	100 W	120 W	150 W	180 W	200 W
	Luminous Flux	4800 lm	6400 lm	8000 lm	9600 lm	12800 lm	16000 lm	19200 lm	24000 lm	28800 lm	32000 lm
	LED Quantity	32 PCS	32 PCS	32 PCS	32 PCS	48 PCS	72 PCS	72 PCS	96 PCS	160 PCS	160 PCS
Luminous Efficacy	160 lm/ W	160 lm/ W	160 lm/ W	160 lm/ W	160 lm/ W	160 lm/ W	160 lm/ W	160 lm/ W	160 lm/ W	160 lm/ W	
Color	Amber		Warm White (WW)		Neutral White (NW)		Cool White (CW)				
Color Temperature	2200-2500K		3000-4000K		4000-5000K		5000-6000K				
Typical CRI	≥70										
Beam Angle	3030 LED chip: 150°x80° / 5050 LED chip: 150°x70°, 150°x80°, 140°x100°										
Material	Aluminum Alloy, Stainless Steel, Tempered Glass, Optical PC lens										
Operating Temperature	-40°C ~ +45°C										
Storage Temperature	-40°C ~ +75°C										
Input Voltage	100 ~ 240V AC										
Frequency	47 ~ 63 Hz										



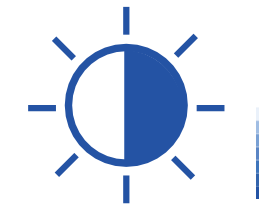
Integrated die-casting aluminum housing, ensuring durability and strength. Smooth back side with toothless design, easy for self-cleaning.



Clip-on assembly, allowing for a tool-free, hassle-free assembly and disassembly process.



Professional anti-glare lens: PC full-cutoff lens T2M / T3M, aimed to minimize light pollution and provide optimal illumination with anti-glare design.



0/1-10V dimming, time control, photocell sensor, IoT control and other functions are optional.



Tempered glass panel, securely fixed without the use of glue, ensuring durability and ease of replacement, while maintaining a clean and seamless appearance.



Equipped with level, easy and accurate installation. Overall structure waterproof design ≥IP66.



# SignSol Outdoor LED

Power Consumption (High efficiency)	20 W	30 W	40 W	50 W	60 W	75 W	100 W	120 W	150 W	180 W	200 W	240 W
Luminous Flux	3200 lm	4800 lm	6400 lm	7500 lm	9600 lm	12000 lm	15500 lm	19200 lm	24000 lm	27900 lm	32000 lm	36000 lm
LED Quantity	96 PCS	96 PCS	96 PCS	96 PCS	160 PCS	160 PCS	160 PCS	320 PCS	320 PCS	320 PCS	480 PCS	480 PCS
Luminous Efficacy	≥160lm/ W			≥150lm/ W	≥160lm/ W		≥155lm/ W	≥160lm/ W		≥150lm/ W	≥160lm/ W	
Power Consumption (Glass)	20 W	30 W	40 W	50 W	60 W	75 W	100 W	120 W	150 W	180 W	200 W	240 W
Luminous Flux	2800 lm	4200 lm	5600 lm	7000 lm	9000 lm	11250 lm	15000 lm	18000 lm	22500 lm	27000 lm	30000 lm	36000 lm
LED Quantity	96 PCS	96 PCS	96 PCS	96 PCS	160 PCS	160 PCS	160 PCS	320 PCS	320 PCS	320 PCS	448 PCS	448 PCS
Luminous Efficacy	≥150lm/ W											
Color	Warm White (WW)				Neutral White (NW)				Cool White (CW)			
Color Temperature	3000 ±300K				4000 ±300K				5700 ±300K			
Typical CRI	≥70											
Beam Angle	160° ×85°, 160° ×95°											
Input Voltage	100 ~240V AC											
Frequency	47 ~63 Hz											
Operating Temperature	-30°C ~+60°C											
Storage Temperature	-30°C ~+50°C											
Material	Aluminum Alloy, Stainless Steel, Optical PC, Tempered glass											
Lifespan	>100,000 hours											



Smooth back side with toothless design, highly dust-proof and self-cleaning.



"PC lens" and "Glass+PC lens" are optional, to meet different market demands.



Independent driver cavity, better protection for LED and driver, prevent fogging.



High expansion, support NEMA interface and various wired or wireless remote control.



A variety of light distribution for different lighting scenes.



Supports horizontal, vertical installation and adjustable angle installation.





Power Consumption	20W	30 W	40 W	50 W	60 W	70W	80W	90W	100W
Luminous Flux	3000 lm	4500 lm	6000 lm	7500 lm	9000 lm	10500 lm	12000 lm	13500 lm	15000 lm
LED Quantity	40 PCS	48 PCS	64 PCS	88 PCS	88 PCS	112 PCS	112 PCS	136 PCS	136 PCS
Luminous Efficacy	≥150 lm/W								
Color	Warm White (WW)			Neutral White (NW)			Cool White (CW)		
Color Temperature	3000 ±200K			4000 ±300K			5700 ±300K		
Typical CRI	≥70								
Beam Angle	155°x75° , 150°x80°								
Input Voltage	100 ~240V AC								
Frequency	47 ~63 Hz								
Operating Temperature	-30° C ~+50° C								
Storage Temperature	-30° C ~+60° C								
Material	Aluminum Alloy, Stainless Steel, Optical PC								
Lifespan	>100,000 hours								



Integrated die-casting aluminum housing with beautiful appearance, compact structure and high strength.



Integrated self-cleaning design, efficient heat dissipation and low light decay.



Professional secondary optical design, support pole distance ≥4.5 times \* height of pole.



Equipped with level, easy and accurate installation.



NEMA C136.10&C136.41 interface are optional, support photocell or single lamp controller.



Arm diameter from 34, 42, 60mm.



# G5/G5S/G5B

30-320 W  
LED STREET LIGHT

# SignSol Outdoor LED

G5	Power Consumption	30W	40W	50W	60W	70W	80W	G5S	100W	120W	150W	
	Luminous Flux	4200±5% lm	5600±5% lm	7250±5% lm	8700±5% lm	10150±5% lm	11600±5% lm		14500±5% lm	17400±5% lm	21750±5% lm	
	LED Quantity	36 PCS			72 PCS				96 PCS		128 PCS	
	Luminous Efficacy	140 lm/W			145 lm/W				145 lm/W			
G5B	Power Consumption	180W		200W		240W		270W		300W		320W
	Luminous Flux	26100±5% lm		29000±5% lm		34800±5% lm		39150±5% lm		43500±5% lm		46400±5% lm
	LED Quantity	192 PCS						256 PCS				
	Luminous Efficacy	145 lm/W										
Color	Warm White (WW)			Neutral White (NW)			Cool White (CW)			Cool White (CW)		
Color Temperature	3000 ±300K			4000 ±300K			5000 ±300K			5700 ±300K		
Typical CRI	≥70											
Beam Angle	G5 150° / 50°; G5S 150° / 50°; G5B 150° / 80° (CREE);											
Input Voltage	200/ 220 ~240 V AC											
Frequency	47 ~63 Hz											
Operating Temperature	-40° C ~ +55° C											
Storage Temperature	-40° C ~ +85° C											
Material	Aluminum Alloy , Stainless Steel, Tempered Glass, Optical PC											
Lifespan	>100,000 hours											



Support standard photocell sensor installation with a 90° adjustable direction. Compatible with Nema or Zhaga interface.



Die-casting aluminum housing equipped with level. Fin backside design to enhance heat dissipation. 4 times pressure tested, no deformation.



Tempered glass and lens design, ensuring precise light distribution while providing fire resistance and delaying lens aging to reduce light degradation.



Support tool-free opening. External SPD. Fast connection of inner wiring, no welding, nor screwdriver needed.



Support 90° installation, include shockproof screws. Horizontal/vertical (-5°~+10°) adjust freely. Support 48mm-60mm lamp arm.



Include a standard respirator to prevent fogging on the interior surface of the fixture.

# GD5

30-80 W  
LED STREET/GARDEN LIGHT

# SignSol Outdoor LED

Power Consumption	30W	40W	50W	60W	70W	80W
Luminous Flux	3750 lm	5000 lm	6250 lm	7500 lm	8750 lm	10000 lm
LED Quantity	96 PCS					
Luminous Efficacy	≥125 lm/W					
Color	Warm White (WW)		Neutral White (NW)		Cool White (CW)	
Color Temperature	3000 ±200K		4000 ±300K		5700 ±300K	
Typical CRI	≥70					
Beam Angle	90° ; 120° ; 90°x155°(T1) ; 60°x145°(T2-M) ; 00°x60°(T3-M) ; 160°(T5-M)					
Input Voltage	100 ~ 240V AC					
Frequency	47 ~ 63 Hz					
Operating Temperature	-30° C ~ +40° C					
Storage Temperature	-30° C ~ +80° C					
Material	Aluminum Alloy , Stainless Steel, Tempered Glass, Optical PC					
Lifespan	>100,000 hours					



Non exposed heat sink, smooth back surface and free from dust.



Entire lamp body is in die-casting housing, with integrated waterproof and tool-free maintenance.



Compatible with street lights and garden lights to meet different usage scenarios.



Optical lens +tempered glass design for even light distribution and fireproofing, to delay the lens aging and to maintain luminous flux.



Street light mode supporting horizontal and vertical installation, supporting -30°to +30° adjusted angle.



Independently lightning protection, waterproof rating ≥IP65.



Model	70 W	90 W	100 W	120 W	150 W	180 W	210 W	250 W	280 W
Luminous Flux	7000 lm	9000 lm	10000 lm	12000 lm	15000 lm	18000 lm	21000 lm	25000 lm	28000 lm
Mono PV panel	150W	180W	200W	250W	300W	2*180W	2*200W	2*250W	2*300W
LiFePO4 Battery	614Wh	768Wh	922Wh	1075Wh	1229Wh	1536Wh	1843Wh	2150Wh	2458Wh
Material	ADC12,AL6063,PC								
Color Temperature	Neutral white 4000±300K, cool white 5000±300K, cool white 5700±300K								
Discharge time	3 days, 12-hour per day								
Controller MPPT( Default )	MPPT default, sensors can be customized								
Storage temperature	-20°C ~ +40°C								
Working temperature	-10°C ~ +50°C								
Battery type	LiFePO4								
Luminous flux	6000~28000 lm								
Luminous Efficacy	100~185lm/W								
Recommended installing height	6~15m								
Control ways	Microwave/Time/Remote								



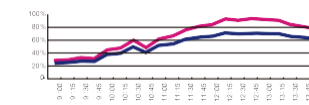
Die-casting housing, overall protection, open housing without tools. Easy maintenance and installation. Support angle adjustment and vertical/horizontal installation.



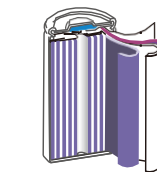
Professional secondary optical design, specially designed for solar street light, maximizing the balance of individual parameters, while minimizing the color reproduction caused by secondary optics.



A new generation SMD high-brightness outdoor leds, combined with the All-in-one lens and lower current drive, the whole lamp efficacy increased 10%, and lower light decay.



The MPPT controller maximum power of the battery board, which improves the energy utilization rate by 15%~20% compared with ordinary controllers.



Adopted First-line A grade batteries with higher energy density, combined with a new generation of protection and temperature control protection, the cycle life is longer and safer. Ternary/ Lithium iron battery for options.

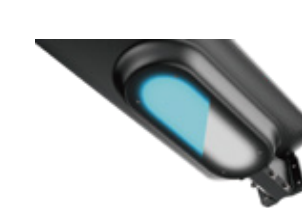


World-class monocrystalline silicon wafers, improved packaging materials and processes, improved light transmittance, anti-aging performance and power generation capacity.





Model	20 W	30 W	40 W	50 W	60 W
Luminous Flux	2000 lm	3000 lm	4000 lm	5000 lm	6000 lm
Mono PV panel	30W	30W	48W	48W	48W
LiFePO4 Battery	154Wh	230Wh	230Wh	307Wh	384Wh
Mono PV panel efficiency	20-23%				
Charging time	4-6 hours				
Discharge time	3 days (intelligent mode, less than 200 times/day) + 4 days low brightness				
Control	Motion/PIR sensor + light control + low battery level dimming				
Color Temperature	Warm white 3000K, neutral white 4000K, cool white 5700K, CRI>70				
Material	Aluminum + stainless steel + PC				
Beam Angle	150°x70°				
Operating Temperature	-10°C ~ +50°C				
Storage Temperature	-20°C ~ +40°C				
Application	Roadway, path way, park, parking lot, villa garden, square, residential				



Besides the main lighting, the special ambient light decorates surroundings.



Horizontal/vertical/wall mounted installation available.



Microwave sensor and time control optional.



The structure around the light emitting surface is optically treated to effectively control the glare and upward light leakage, which minimizes light pollution and protects the environment.



Easy and simple to maintain at frontal side.



Integrated high-pressure aluminum alloy casting housing, with thickened design, which has better heat dissipation and anti-corrosion ability, and longer life span. Strengthened structure can withstand 4 times of its gravity simply.



# S5A

20-120 W  
SOLAR LED STREET LIGHT

# SignSol Outdoor LED

Model	20 W	30 W	40 W	50 W	60 W	70 W	80 W	90 W	100 W	110 W	120 W
Luminous Flux	2000 lm	3000 lm	4000 lm	5000 lm	6000 lm	7000 lm	8000 lm	9000 lm	10000 lm	11000 lm	12000 lm
Mono PV panel	35 W	35 W	43 W	43 W	70 W	85 W	85 W	105 W	105 W	135 W	135 W
LiFePO4 Battery	154 Wh	230 Wh	230 Wh	307 Wh	384 Wh	461 Wh	538 Wh	614 Wh	614 Wh	691 Wh	768 Wh
Mono PV panel efficiency	20-23%										
Charging time	<6 hours										
Discharge time	3 days (intelligent mode, less than 200 times/day) + 4 days low brightness										
Control	Motion/PIR sensor + light control + low battery level dimming										
Color Temperature	Warm white 3000K, neutral white 4000K, cool white 5700K, CRI>70										
Material	Aluminum + stainless steel + PC										
Beam Angle	155°x70° (T2-M); 155° x70° (T3-M); bat wing; Anti-UV										
Operating Temperature	-10°C ~ +50°C										
Storage Temperature	-20°C ~ +40°C										
Application	Roadway, path way, park, parking lot, villa garden, square, residential										



Installation angle -15° - +105 ° adjustable. Horizontal, vertical, wall mounted installation available.



Temperature Protection System, Triplex temperature control in battery cell, battery pack and controller.



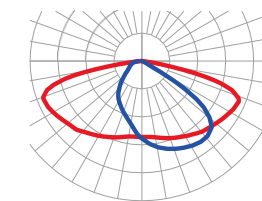
Die cast aluminum box, tool-free access, easy to replace battery and sensor. Aluminum+ stainless steel with corrosion protection.



MPPT controller, 15-20% higher efficiency than PWM.



2000 cycles of full charge and full discharge. Theoretical lifespan of battery is 16.4 (2000\*3/365) years.



T2M+T3M batwing light distribution, by which brightness is 20% more, and uniformity is 50% higher than last generation.



## Control System of Street Light

The street light control system of Dianming is developed by its own engineering team based on years of experience of street lighting, aim to fulfill customer's requirement with more competitive price and more excellent performance. In this system, the user can fill the load information according to actual environment, the system will calculate automatically the capacity of solar panel and battery. The concept of local average daily sunlight hours, makes the system meet the individual needs of customers.



With high efficiency street light, combined with optic, the average lux is 20% higher.



Modular design of connection, easy installation, no need of buried battery and complex wiring.



High quality lithium battery, matching in group under strict requirement, lifetime is 2-3 times of lead-acid battery.



Remote controller can be used to set or change the system parameter.



Using high quality photovoltaic panel, the transfer efficiency is more than 20%, and lifetime is more than 25 years.



Power Consumption (Type A)	150 W	200 W	240 W	300 W	450 W	720W	960W	1200W
Luminous Flux	21000 lm	29000 lm	33600 lm	42000 lm	63000 lm	104400 lm	139200 lm	174000 lm
LED Quantity	176 PCS	352 PCS	352 PCS	352 PCS	528 PCS	1056 PCS	1408 PCS	1760 PCS
Luminous Efficacy	140 lm/W	145 lm/W	140 lm/W	140 lm/W	≥140lm/W	≥145lm/W	≥145 lm/W	≥145lm/W

Power Consumption (Type B)	600W	900W	1200W	1440W
Luminous flux	84000 lm	126000 lm	168000 lm	201600 lm
LED Quantity	704 PCS	1056 PCS	1408 PCS	1760 PCS
Luminous Efficacy	≥140 lm/W			

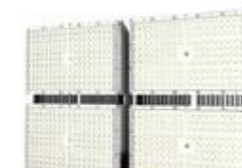
Color	Warm White (WW)	Neutral White (NW)	Cool Whit	e (CW)
Color Temperature	3000 ±300K	4000 ±300K	5700 ±	300K
Typical CRI	≥70			
Beam Angle	15°,40°			
Input Voltage	100~240V AC/ 440V			
Frequency	47~63Hz			
Storage Temperature	-30°C~+50°C			
Operating Temperature	-30°C~+60°C			
Material	PC, Aluminum Alloy			
Lifespan	>100,000 hours			



-span (150W-1250W), easy for installation and maintenance, light weight but ensures effective heat dissipation.

driver cavity design, heat dissipation and reliability, overall protection and ensures longer lifespan.

Smooth fin design. The isolated suspended driver cavity and light source modules can avoid heat accumulation and improve heat dissipation efficiency.



Focus on high pole lighting with secondary photometric design, high uniformity and utilization, multi-angle light distribution options. Anti-overflow light hood design for reducing light pollution.



A new generation high brightness outdoor led, lower current drive. The whole lighting efficacy increased by about 10%, and lower light decay.



Power Consumption	240W	360W	480W	720W	960W
Luminous Flux (45°, 15°)	32400±5% lm	48600±5% lm	64800±5% lm	97200±5% lm	129600±5% lm
LED Quantity (45°, 15°)	216 PCS	288 PCS	432 PCS	648 PCS	864 PCS
Luminous Flux (60°, 90°)	32400±5% lm	/	64800±5% lm	97200±5% lm	129600±5% lm
LED Quantity (60°, 90°)	288 PCS	/	576 PCS	864 PCS	1052 PCS
Luminous Flux (105°, 55°)	32400±5% lm	/	64800±5% lm	97200±5% lm	129600±5% lm
LED Quantity (105°, 55°)	288 PCS	/	576 PCS	864 PCS	1052 PCS
Luminous Efficacy	≥135 lm/W (Lumileds 3030)				
Color	Warm White (WW)		Neutral White (NW)		Cool White (CW)
Color Temperature	3000 ±300K		4000 ±300K		5700 ±300K
Typical CRI	≥70				
Beam Angle	20°x15°; 45°; 60°; 90°; 120°; Asymmetric 105°/55°				
Input Voltage	100 ~ 240V AC/440V AC				
Frequency	47~63Hz				
Storage Temperature	-20°C~+45°C				
Operating Temperature	-20°C~+60°C				
Material	PC, Aluminum Alloy, Tempered Glass				
Lifespan	>100,000 hours				



Separate module design, 240W each module integrated with driver, support 1-4 modules and fast maintenance. Hood design for option.



Adopt integrated protection process combined die-casting and tempered glass, protecting from high density salt spray and other gas corrosion.



Professional light distribution with secondary optical design to meet high uniformity and utilization rate. Optional lens for improving light utilization and reducing light waste and pollution.



Equipped with independent bracket for setting the driver, better heat dissipation, and fast maintenance.



IP67. IK09. Built-in respirator to prevent water and fog inside the lamp.



Power Consumption	40W	50W	60W	80W	100W	120W	150W	180W
Luminous Flux	5600 ±5%lm	7000±5% lm	8400±5% lm	11200±5% lm	14000±5% lm	16800±5% lm	21000±5% lm	25200±5% lm
LED Quantity	48 PCS	48 PCS	48 PCS	48 PCS	48 PCS	48 PCS	96 PCS	96 PCS
Luminous Efficacy	≥150 lm/W			≥140 lm/W				
Power Consumption	200W	240W	270W	300W	350W	400W	480W	
Luminous Flux	28000±5% lm	33600±5% lm	37800±5% lm	42000±5% lm	49000±5% lm	56000±5% lm	67200±5% lm	
LED Quantity	96 PCS	96 PCS	144 PCS	144 PCS	192 PCS	192 PCS	192 PCS	
Luminous Efficacy	≥140 lm/W							
Color	Warm White (WW)		Neutral White (NW)		Cool White (CW)			
Color Temperature	3000 ±300K		4000 ±300K		5700 ±300K			
Typical CRI	>70							
Beam Angle	85°x155°,102°x155°,125°x148°,23°x105°							
Input Voltage	100 ~240V AC							
Frequency	47~63Hz							
Storage Temperature	-30°C~+50°C							
Operating Temperature	-30°C~+60°C							
Material	Aluminum Alloy, Optical PC, Tempered Glass, Stainless Steel							
Lifespan	>100,000 hours							



Perfect module design, using 5mm tempered glass, waterproof level meets IP67, allows to combine 1~4 modules according to actual needs of projects



All connectors are tool-free waterproof plug-in design.



Equipped with an independent power supply chamber, supports independent lightning protection requirements



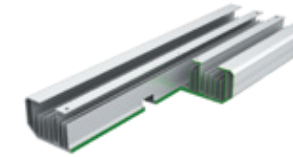
Reinforced insulation design, supporting CLASS I, CLASS II.



Stainless steel shell is optional to prevent galvanic corrosion in extreme environments



Power Consumption	20 W	30 W	40 W	50 W	60 W	80 W	100W
Luminous Flux	2800 lm	4200 lm	6300 lm	7000 lm	8400 lm	11200 lm	14000 lm
LED Quantity(Lumileds)	24 PCS	32 PCS	48 PCS	56 PCS	64 PCS	88 PCS	112 PCS
Luminous Efficacy	140 lm/W						
Power Consumption	120 W	150 W	180 W	200 W	240 W	270 W	300W
Luminous Flux	16800 lm	21000 lm	25200 lm	28000 lm	33600 lm	37800 lm	42000 lm
LED Quantity(Lumileds)	128 PCS	160 PCS	192 PCS	216 PCS	256 PCS	288 PCS	320 PCS
Luminous Efficacy	140 lm/W						
Color	Warm White (WW)		Neutral White (NW)		Cool White (CW)		
Color Temperature	3000 ±300K		4000 ±300K		5000 ±300K		
Typical CRI	≥70						
Beam Angle	150°x70°						
Input Voltage	100 ~ 240V AC						
Frequency	47 ~ 63 Hz						
Storage Temperature	-30°C ~ +60°C						
Operating Temperature	-30°C ~ +50°C						
Material	PC, Aluminum Alloy, Stainless steel						
Lifespan	>100,000 hours						



Patented dustproof downwind radiator design special for tunnel, high efficient heat dissipation.



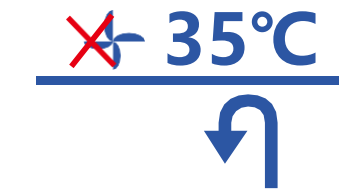
Patented anti-shock structure design. Safe and reliable structure, not directly supported by screws.



Imported optical PC lens, which has strong anti-aging performance and good light transmission.



Adjustable elevation angle of the fixture. Adjustment accuracy is  $\leq 10^\circ$ .



The maximum temperature of welding feet of LED is  $35^\circ\text{C}$  in no wind environment in order to meet the use in harsh areas.



# H9

100-200 W  
LED HIGH BAY LIGHT

# SignSol Outdoor LED

Power Consumption	100W	150W	200W	100W	150W	200W
Luminous Flux	14000 lm±5%	21000 lm±5%	28000 lm±5%	16000 lm±5%	24000 lm±5%	32000 lm±5%
Luminous Efficacy	140lm/W			160lm/W		
Color	Neutral White (NW)		Cool White (CW)		Cool White (CW)	
Color Temperature	4000±300K		5000±300K		6500±300K	
Typical CRI	≥70					
Beam Angle	60°,90°,120°					
Input Voltage	100 ~ 277V AC					
Frequency	50/60Hz					
Storage Temperature	-20°C~+80°C					
Operating Temperature	-20°C~+45°C					
Material	PC, Graphene					
Lifespan	>100,000 hours					



The heat sink is made of graphene high thermal conductivity composite material, with good heat dissipation effect. The thermal conductivity reach 30W/m, The thermal radiation coefficient is higher than 0.85.



Integrated die-casting process and convection heat dissipation design, higher heat dissipation efficiency and lighter weight. With very strong corrosion resistance, adapt to bad environment at outdoor.



Adopt a new generation of SMD high power Led. Combined with all-in-one lens and lower current driver, Improve the integral light efficacy by 10%, lower light decay. No Flicker ,Stable Performance.



Optional ( 60°/90°/120° ) , Suitable for different scene requirements.



Support customized PC cover design.





Power Consumption	100 W	120 W	150 W	180 W	200 W
Luminous Flux	15000 lm	18600 lm	23250 lm	27900 lm	31000 lm
LED Quantity	260 PCS	400 PCS	400 PCS	540 PCS	540 PCS
Luminous Efficacy	150 lm/W	155 lm/W			
Color	Warm White(WW)	Neutral White (NW)	Cool White (CW)	Cool White (CW)	
Color Temperature	3000 ±300K	4000 ±300K	5000 ±300K	5700 ±300K	
Typical CRI	≥70				
Beam Angle	100W 50° / 90° / 110°	120 ~150W 60° / 90° / 110°		180 ~200W 40° / 90° / 110°	
Input Voltage	100 ~240V AC				
Frequency	47 ~63 Hz				
Storage Temperature	-30° C ~+60° C				
Operating Temperature	-30° C ~+45° C				
Material	ADC12, PC				
Lifespan	>100,000 hours				



Integrated die-casting process and convection heat dissipation design, higher heat dissipation efficiency and lighter weight.



Combined with an integrated lens and lower current drive, overall light efficacy increased by 10%, lower light attenuation.



Multi-angle lens light distribution optional, suitable for different scene requirements.



Support customized square driver design



Integrated structure waterproof design, eliminate glue for waterproof, waterproof grade ≥IP65



# SignSol

# OUTDOOR LED LIGHTING



## SIGNSOL LTD.

Address: Unit 5 St Martin's Court,  
Cole Road,  
Bristol  
BS4 3QX

TEL: +44-117-230 2442  
MOB: +44-7508523411  
WEB: [www.signsol.co.uk](http://www.signsol.co.uk)

Powered By SignSol

# SignSol